

CRC400 Range of Universal Reader Interfaces

Product Description

The CRC400 range of Universal Reader Interface (URI) products enables access control/membership software running on a PC to communicate with multiple card readers and manage access via barriers and turnstiles.

The software can link to up to 31 CRC400 reader interface modules through a single RS232 or USB port, or via a TCP/IP network connection. Up to 4 interface modules can be provided in a single enclosure. Each module is capable of managing a card reader or keypad and an associated barrier/turnstile.

Each CRC400 module sends data collected by the attached card reader or keypad together with the identity of the reader/keypad to the software via the master module. If the software identifies that the data is valid, it is able to permit access to the card holder through the barrier or turnstile by sending a simple command to the corresponding CRC400 module.

The CRC400 series is ideal for use in the leisure industry when combined with third party membership software.

The CRC400 series of controllers is compatible with all Nortech's reader technologies and can support many third party readers and keypads.



Features

- ▶ Supports several reader technologies and output formats
- ▶ Up to 31 access points can be managed via a single RS232 port, USB port or TCP/IP network connection on the PC
- ▶ Supports PINs of up to 15 digit from a connected keypad
- ▶ Simplifies software development by using a simple command structure
- ▶ Compatible with several third party database/membership management systems
- ▶ Modular product family enables easy and cost-effective installation
- ▶ Supports Free Exit
- ▶ Auxiliary output for controlling card capture, DVR, etc.
- ▶ Supplied in housing with integral 12V DC, 3A power supply.
- ▶ Up to 4 reader interfaces per housing

Applications

- ▶ Membership Access Control
- ▶ Leisure Centres
- ▶ Fitness Clubs
- ▶ Golf Clubs
- ▶ Social Clubs
- ▶ Process Control

Specifications

Electrical

- Supply Voltage: 240V AC
- Current draw: 200 mA maximum per module
- Reader supply: 12V DC or 5V DC (100 mA max.)

Physical

- Local settings: DIP switches for setting node identity
- Dimensions (mm): Enclosure: 325 x 300 x 135 (H x W x D)
- Cable Termination: RS232 to PC: 9-pin D-type connector
TCP/IP (special variants): RJ45 socket
Other: Plug-in terminal blocks
- Output relays: Voltage free changeover relay per reader, rated at 2A @ 30V DC
Variable output times driven by software
- Request to Exit: Ground activated input per reader, 0.5 or 5 second operation
- Auxiliary Outputs: Open-collector output per reader

Cabling Requirements

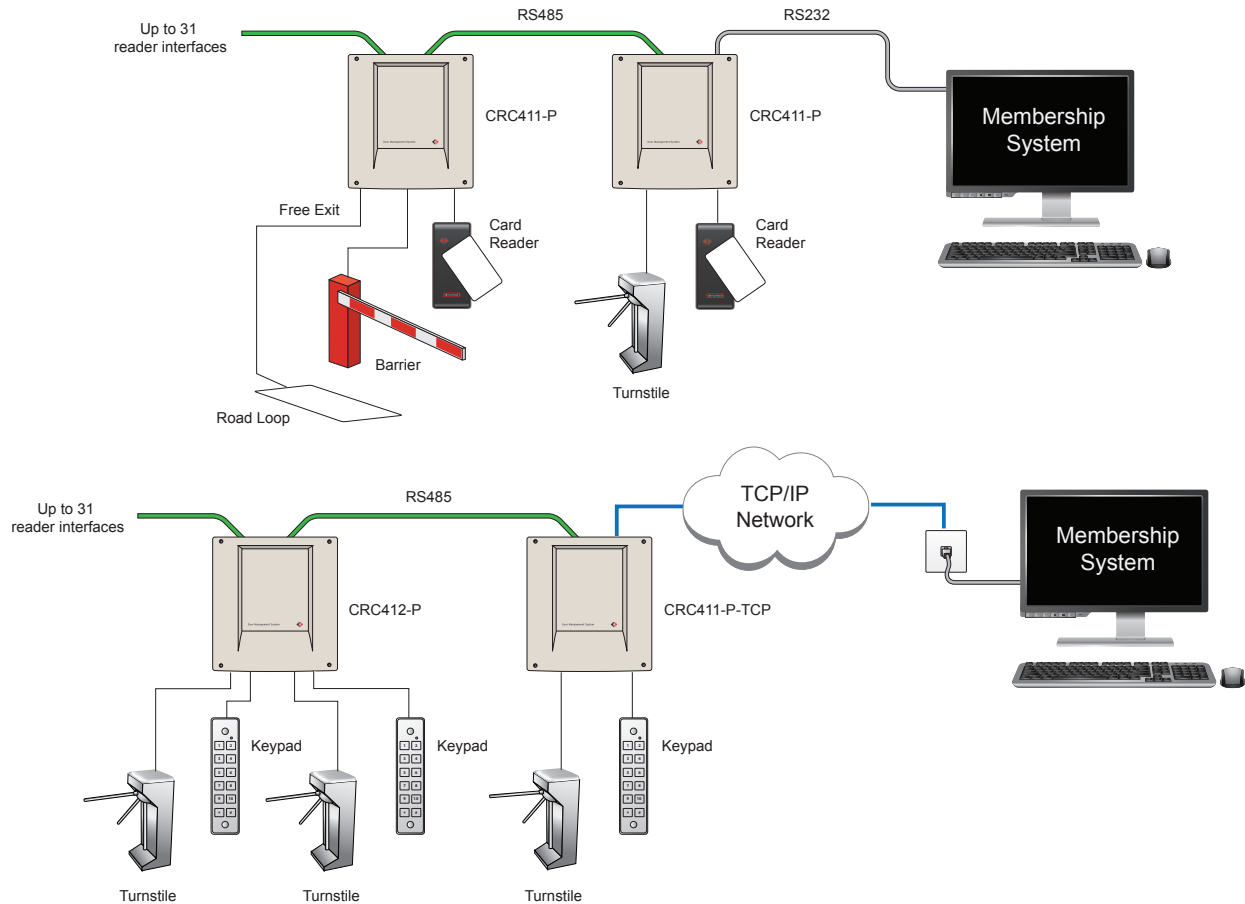
- PC connection: RS232 cable (25m max) or TCP/IP (special variants)
- follow standard data networking recommendations
- RS485: Cabling Belden 9729 or equivalent (1200m max)
- Reader Cabling: Belden 9536 or equivalent (25m max for RS232 reader,
100m max for C&D or Wiegand reader)

Environmental

- Operating temp.: 0°C to 40°C
- Storage temp.: -20°C to 70°C
- Relative humidity: 95% non-condensing

CRC400 Range of Universal Reader Interfaces

Connection Details



Product Compatibility

The CRC400 product range is compatible with membership management software products developed by leading companies such as:

- ▶ Gladstone Health & Leisure
- ▶ EZ Runner
- ▶ Legend
- ▶ SDA Software

Note: This is for guidance only and compatibility is not limited to products from these companies.

Ordering Information

CRC411-P	Single reader interface system in plastic enclosure with integral 3A 12V PSU	CRC411-P-TCP	Single reader interface system in plastic enclosure with integral 3A 12V PSU and TCP interface
CRC412-P	2-reader interface system in plastic enclosure with integral 3A 12V PSU	CRC412-P-TCP	2-reader interface system in plastic enclosure with integral 3A 12V PSU and TCP interface
CRC413-P	3-reader interface system in plastic enclosure with integral 3A 12V PSU	CRC413-P-TCP	3-reader interface system in plastic enclosure with integral 3A 12V PSU and TCP interface
CRC414-P	4-reader interface system in plastic enclosure with integral 3A 12V PSU		